

ROTOR ASSEMBLY R327

3000 bar 40L/1500 bar 100L



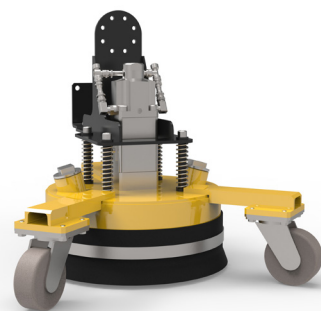
The Rotor Assembly R327 is a surface preparation tool that is designed for removal of the topmost layer of concrete and steel surfaces. The rotor is equipped with 2-4 nozzles for concrete removal and up to 20 nozzles for surface preparation.

The hydraulic driven rotor is attached to the robot feed beam. An option in GUI 7.0 Control system ensures proper operation of the rotor. The Rotor Assembly R327 includes Stability Support Sliders to ensure alignment with the surface.

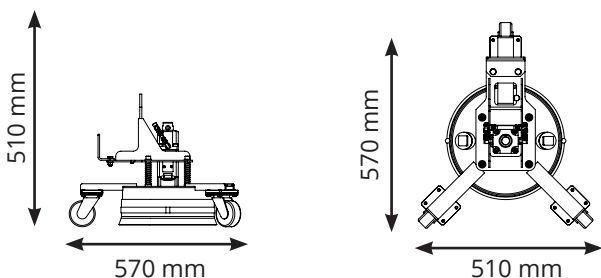


TECHNICAL DATA

	3000 BAR - 40L	1500 BAR - 100L
Application	Paint removal	Concrete scarifying
Weight	50kg (110lb)	50kg (110lb)
Max pressure	3000 bar	1500bar
Max flow	40lpm	100lpm
Cutting diameter	220mm (0ft 7in)	250mm (0ft 9 in)
No. of nozzles	2-20	2-20
Nozzle type	P	P



SIZE



OPTIMAL FOR

- For surface preparation and scarifying
- For paint and membrane removal