

ROTOR ASSEMBLY NALTA

3000BAR / 20LPM

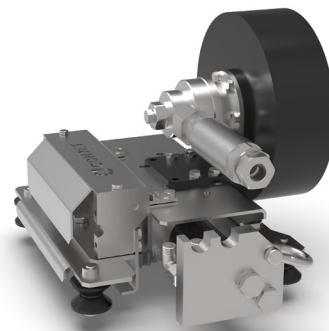


The Rotor Assembly Nalta is a surface preparation tool that is designed for removal of the topmost layer of concrete and steel surfaces.

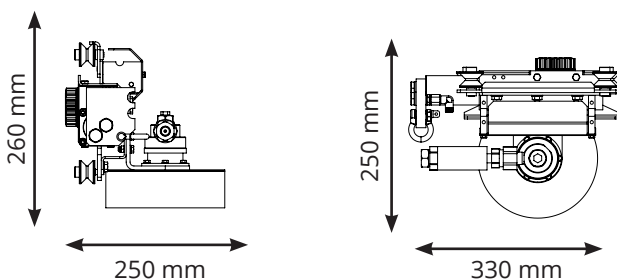
The Nalta rotor comes with a complete cradle that is ready to be connected to the Nalta feed beam. The Rotor Assembly Nalta is used for paint removal or concrete scarification, and is powered by high-pressure water.

TECHNICAL DATA

Application	Paint removal
Weight	18kg (39lb)
Max pressure	3000Bar
Max flow	20lpm
Cutting diameter	150mm (0ft 6in)
Nozzle type	P



SIZE



OPTIMAL FOR

- Paint removal
- Concrete scarification